

Welcome Home!



\$ 459,000

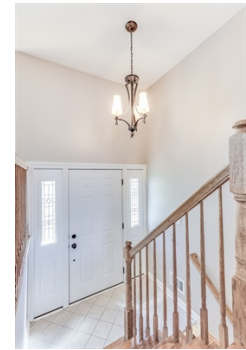


20 Castle Dr, Chestnut Ridge, NY 10977

WEB: ChestnutRidgeNYHome.com

- » Beds: 3
- » Single Family | 1,632 ft²
- » New Bay Windows & Hardwood Floors Throughout
- » Updated Eat in-Kitchen
- » 3/4 Beds & 1.5 Bath
- » Half Acre of Park Like Views
- » 2 Car Garage,

QR Code



Rachel L. Baruchov
(917) 710-1435 (Cell)
(845) 354-3246 (Office)
rachel@platinumrealtyny.com
<http://www.rachelbaruchov.com>

Platinum Realty Associates
400 Rella Blvd.
Suffern, NY 10901
(845) 354-3246



Spectacular Bi-level located in one of the most sought out area in Chestnut Ridge. This home boasts an immaculate updated eat in-kitchen with white cabinets and stainless steel appliances. Bright and open formal living room with new bay windows & hardwood floors throughout. Door off kitchen leading out to new deck overlooking this magnificent half acre of park-like property with views of Pascack river. 3 spacious bedrooms with possible 4th downstairs and 1.5 baths. Master bedroom with lots of closets and dual entry to bathroom. Cozy family room with sliding doors leading to gorgeous patio and backyard. Many updates include new siding, windows, doors, front door, freshly painted, new banister, new ceramic tiles by entrance/foyer, recess lighting & more. 2 car garage, one is heated. If you are looking for privacy yet want to be close to everything and enjoy nature this is your home! Low taxes! Hurry for good deals don't last!

